

Register your product and get support at
www.philips.com/welcome

POCKET MEMO

LFH9375/00

LFH9375/27



EN	User manual	3
DE	Benutzerhandbuch	29
FR	Manuel de l'utilisateur	55

ES	Manual del usuario	83
IT	Manuale di istruzioni	111
NL	Gebruikershandleiding	139

PHILIPS

User manual

1	Important	4	5	Use more of your Pocket Memo 20
2	Your Pocket Memo	5	5.1	Use Philips SpeechExec software 20
2.1	Product highlights	5	5.1.1	Advanced configuration 20
2.2	What's in the box	5	5.1.2	Download recordings to the PC 20
2.3	Overview	6	5.2	Use voice-activated recording 21
2.3.1	Controls and connections	6	5.3	Work with index marks 22
2.3.2	Display indicators and symbols	7	5.3.1	Insert an index mark 22
			5.3.2	Delete an index mark 23
3	Get started	8	5.4	Assign an author's name 23
3.1	Install the batteries	8	5.5	Update the firmware 24
3.2	Charge the batteries	8	5.6	Menu settings 25
3.3	Insert and eject the memory card	9	5.6.1	Menu list 26
3.4	Format a new memory card	9	6	Technical data 28
3.5	Activate the Pocket Memo 10			
3.5.1	Set the language	10		
3.5.2	Set the date and time	10		
3.6	Power-save mode 11			
4	Use your Pocket Memo 12			
4.1	Recording 12			
4.1.1	Create a recording	12		
4.1.2	Review recording	13		
4.1.3	Edit a recording (insert/overwrite/ append)	13		
4.1.4	Finish (lock) a recording	14		
4.1.5	Change the recording format	15		
4.1.6	Adjust the microphone sensitivity	16		
4.2	Playback 17			
4.2.1	Overview of playback functions	18		
4.3	Delete a file 18			

1 Important

Philips reserves the right to change products at any time without being obliged to adjust earlier supplies accordingly.

The material in this manual is believed adequate for the intended use of the system. If the product, or its individual modules or procedures, are used for purposes other than those specified herein, confirmation of their validity and suitability must be obtained.

Safety

- To avoid a short circuit, do not expose the product to rain or water.
- Do not expose the device to excessive heat caused by heating equipment or direct sunlight.
- Protect the cables from being pinched, particularly at plugs and the point where they exit from the unit.
- Back up your files. Philips is not responsible for any loss of data.

Hearing safety

Observe the following guidelines when using your headphones:

- Listen at reasonable volumes for reasonable periods of time.
- Be careful not to adjust the volume higher as your hearing adapts.
- Do not turn up the volume so high that you can't hear what's around you.
- You should use caution or temporarily discontinue use in potentially hazardous situations.
- Do not use headphones while operating a motorized vehicle, cycling, or skateboarding, etc. It may create a traffic hazard and is illegal in many areas.

Important (for models supplied with headphones):

Philips guarantees compliance with the maximum sound power of its audio players as determined by relevant regulatory bodies, but only with the original model of provided headphones. If these headphones need replacement, we recommend that you contact your retailer to order a Philips model identical to that of the original.

Small children

Your device and its enhancements may contain small parts. Keep them out of the reach of small children.

Disposal of your old product

- Your product is designed and manufactured with high quality materials and components that can be recycled and re-used.
- When this crossed-out wheeled bin symbol is attached to a product, it indicates that the product is covered by the European Directive 2002/96/EC.
- Become informed about your local separate collection system for electrical and electronic products.
- Act according to your local rules and do not dispose of old products with normal household waste. The correct disposal of old products will help prevent potential negative consequences for the environment and human health.
- Batteries (including built-in rechargeable batteries) contain substances that may pollute the environment. All batteries should be disposed of at an official collection point.



2 Your Pocket Memo

Congratulations on your purchase and welcome to Philips!

To fully benefit from the service that Philips offers, visit our Website for support information such as user manuals, software downloads, warranty information and more: www.philips.com/support.

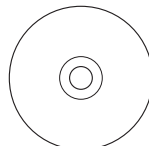
2.1 Product highlights

- The Pocket Memo's asymmetrical and ergonomic design delivers unparalleled user-friendly operation. All buttons are within the sweep-angle of the thumb.
- Two smart buttons let you scroll through menu options and quickly make selections.
- A large graphical display lets you view all file information, such as keywords (author name), length of dictation, position within the file, and other vital information at a glance. A backlit display shows all information, even in poor lighting conditions.
- The .dss file format is the international standard for professional speech processing. Offering excellent audio quality for recorded voice, .dss files allow a high compression rate, reduced file sizes, network traffic and required storage capacity.
- SpeechExec Dictate is the perfect download software to manage voice files. The intuitive user interface makes job retrieval simple and fast, and the job status information allows the tracking of all the work in progress.

2.2 What's in the box



Pocket Memo



CD-ROM containing software and user manual



Memory card



Rechargeable batteries



Pouch



USB cable

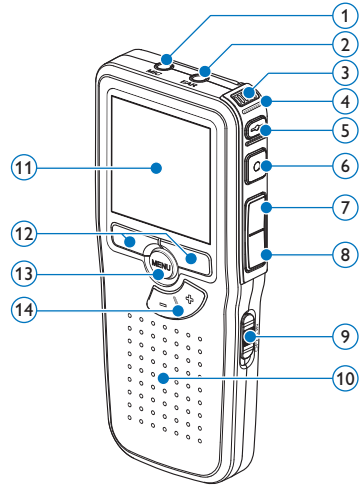


Quick start guide

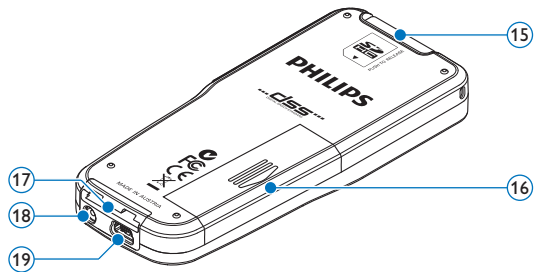
2.3 Overview

2.3.1 Controls and connections

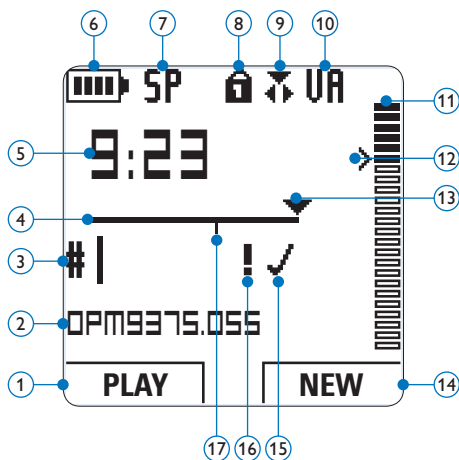
- ① Microphone socket
- ② Headphone socket
- ③ Built-in microphone
- ④ Status LED
- ⑤ EOL (end-of-letter) button
- ⑥ Record button
- ⑦ REW (Rewind) button
- ⑧ FWD (Forward) button
- ⑨ On/off switch
- ⑩ Speaker
- ⑪ Display
- ⑫ Smart buttons
- ⑬ Menu button
- ⑭ +/–, menu navigation and volume control



- ⑮ Memory card slot
- ⑯ Battery compartment
- ⑰ Docking station connection slot
- ⑱ Power supply socket
- ⑲ USB connection slot



2.3.2 Display indicators and symbols



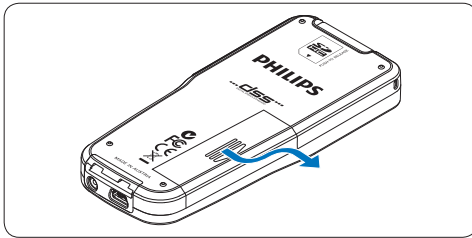
- | | |
|---|---|
| ① Current function of the left smart button | ⑩ Voice-activated recording in progress |
| ② File name | ⑪ Recording level meter |
| ③ Recording number | ⑫ Sensitivity level for voice-activated recording |
| ④ Position bar | ⑬ Current position in the recording |
| ⑤ Recording / playback time | ⑭ Current function of the right smart button |
| ⑥ Battery level indicator | ⑮ Recording is marked finished (EOL) and locked |
| ⑦ Recording format | ⑯ Recording is marked priority |
| ⑧ Memory card is write-protected (locked) | ⑰ Recording contains index mark |
| ⑨ Recording mode | |

3 Get started

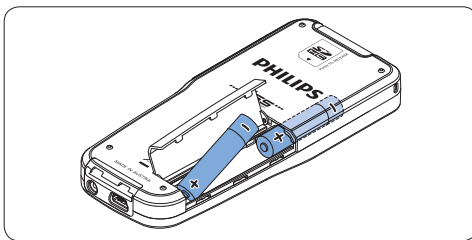
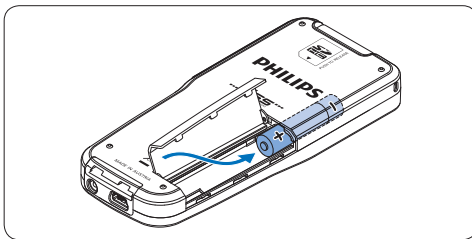
3.1 Install the batteries

The Pocket Memo can be operated with the two AAA rechargeable batteries LFH9154 delivered with the product. Standard (non-rechargeable) AAA alkaline batteries may also be used.

- 1 The on/off switch of the Pocket Memo must be in the **OFF** position.
- 2 Open the battery compartment on the back side of the Pocket Memo by sliding it outwards then folding it up.



- 3 Insert the two AAA batteries. The correct polarity is indicated on the inside of the battery compartment cover.



- 4 Close the battery compartment by folding it down and sliding the battery compartment cover inward until it clicks.

ⓘ Note

- Do not mix battery types! Use two rechargeable batteries (Philips LFH9154) or two non-rechargeable alkaline batteries.
- Remove the batteries if you will not be using the recorder for an extended period. Leaking batteries may damage the Pocket Memo.
- If the Pocket Memo malfunctions, remove the batteries and re-insert them.
- Stop the recorder before replacing the batteries. Removing the batteries while the recorder is in use may corrupt the file.
- When the batteries are nearly empty, the battery indicator blinks.

3.2 Charge the batteries

The Pocket Memo can be operated with [Philips rechargeable batteries LFH9154](#). To recharge these batteries, use USB cable. Optionally, the [Philips Power Supply 9146](#) or the [USB Docking Station 9120](#) may also be used.

When the Pocket Memo is connected to a PC or notebook computer with the supplied USB cable, the rechargeable batteries are automatically recharged. If the USB port on the computer is high powered, a complete recharge cycle takes about 2.5 hours.

ⓘ Note

- Batteries other than the supplied Philips batteries LFH9154 cannot be charged.
- Fully charge the batteries before first use.
- The computer must be ON when charging the batteries.
- The Pocket Memo may become warm during fast recharging.

! Important

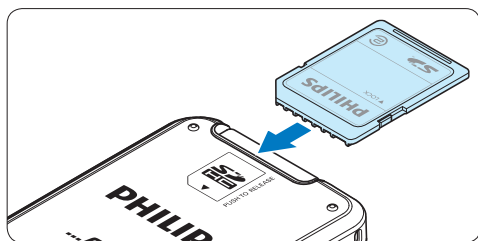
If the USB port of the computer does not supply enough power capacity (500 mA), disable the USB quick charge function in the menu of the Pocket Memo and recharge.

3.3 Insert and eject the memory card

The Pocket Memo operates with a SD (SecureDigital) memory card and supports SDHC cards with storage capacities of up to 32 GB.

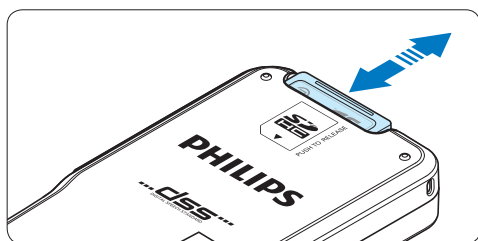
To insert a memory card:

- 1 Locate the memory card slot on the top back side of the Pocket Memo.
- 2 Slide the memory card into the slot. A small illustration under the memory card slot indicates the correct orientation.
- 3 Push the memory card in until it clicks.



To eject the memory card:

- 1 Locate the memory card slot on the top back side of the Pocket Memo.
- 2 Press the memory card into the Pocket Memo until it clicks.
- 3 Release the memory card. It will slightly emerge from the memory card slot. Simply slide it out.



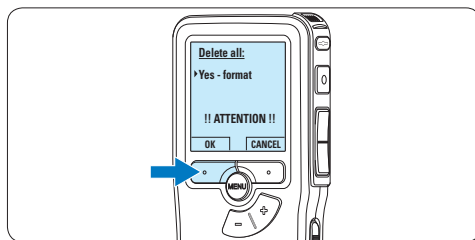
ⓘ Note

If the Pocket Memo is turned to the ON position and there is no memory card inserted, a warning screen is displayed.

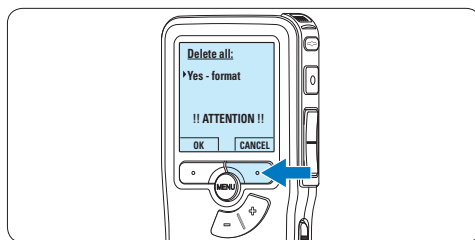
3.4 Format a new memory card

When a new, unformatted memory card (or a memory card that was formatted with a non-Pocket Memo device) is inserted, the Pocket Memo will display a prompt to format the memory card.

- 1 To confirm and start the formatting process, press the **OK** smart button.



- 2 To cancel the formatting process, remove the memory card or press the **CANCEL** smart button.

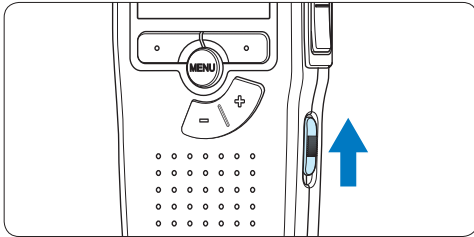


ⓘ Note

Formatting is not possible if the memory card is in read-only mode (locked).

3.5 Activate the Pocket Memo

The Pocket Memo is turned on and off by sliding the **ON/OFF** switch. When using it for the first time, you will be prompted to set the language, date and time.



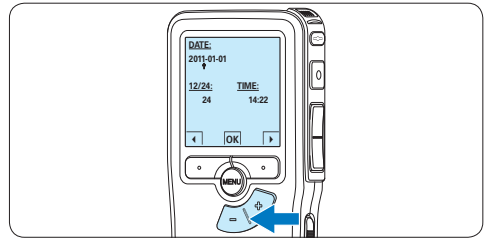
Note

It is possible to change the language later using the menu. See [5.6 Menu settings on page 25](#) for more information.

3.5.2 Set the date and time

When using the Pocket Memo for the first time, you will be prompted to set the current date and time.

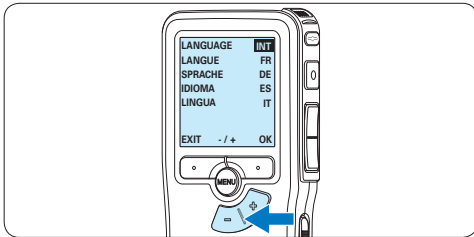
- 1 Press the **+** or **-** button to change the value for the year, month or day.



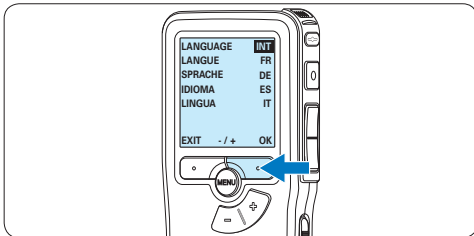
3.5.1 Set the language

When using the Pocket Memo for the first time, you will be prompted to set the language.

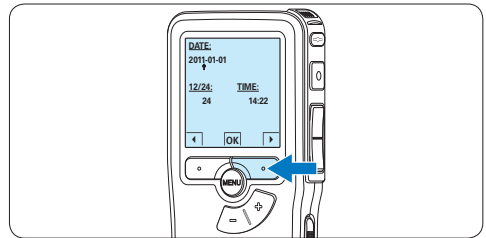
- 1 Press the **+** or **-** button on the Pocket Memo to select a language.



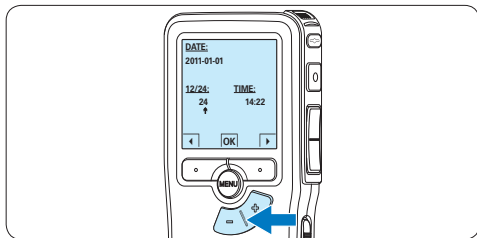
- 2 Press the **OK** smart button to confirm the selection. The selected language will be displayed.




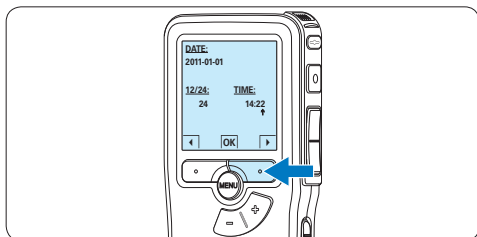
- 2 Press the **▶** smart button to advance the arrow (↑) to the next entry. After setting the day, press the **▶** smart button to advance the settings to the correct time.




- 3 Press the **+** or **-** button to select a 12-hour or 24-hour clock, AM or PM (if a 12-hour clock is selected), and to change the value of the hour and minute settings.

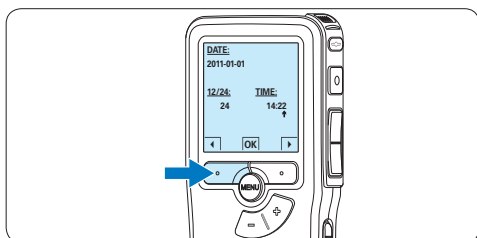


- 4 Press the  smart button to confirm the date and time.
The Pocket Memo is now ready to function.



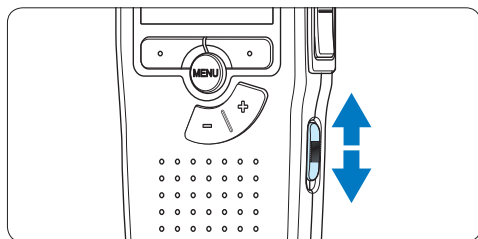
Note

If a mistake is made in setting the date/time, use the  smart button any time during the procedure to step back to make corrections. It is also possible to change the date and time later using the menu. See [5.6 Menu settings on page 25](#) for more information.



3.6 Power-save mode

After sixty minutes of inactivity, the Pocket Memo automatically goes into power-save mode and the LCD screen will display the date and time. Press any button to reactivate it. If the Pocket Memo is not used for more than two hours, it turns off completely. Turn the unit on by moving the On/Off switch to the **OFF** position and then back to the **ON** position.



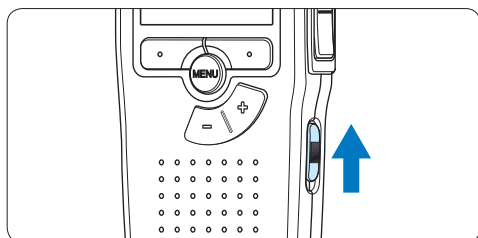
4 Use your Pocket Memo

4.1 Recording

4.1.1 Create a recording

Follow these steps to create a recording with the Pocket Memo:

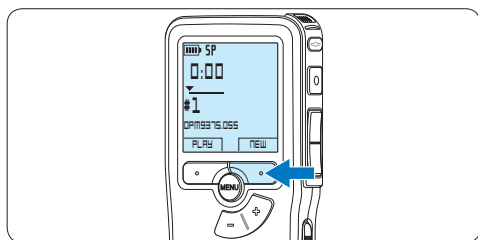
- 1 A memory card must be inserted into the memory card slot. See [3.3 Insert and eject the memory card](#) on page 9 for more information.
- 2 Slide the On/Off switch to the **ON** position to switch on the Pocket Memo.



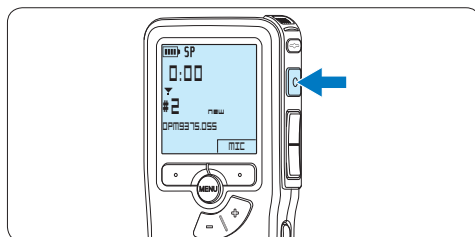
- 3 Press the **NEW** smart button to create a new recording.

Note

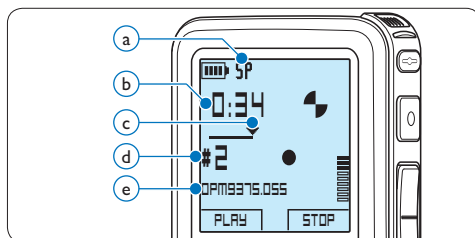
The **NEW** smart button is not displayed if the current recording is empty.



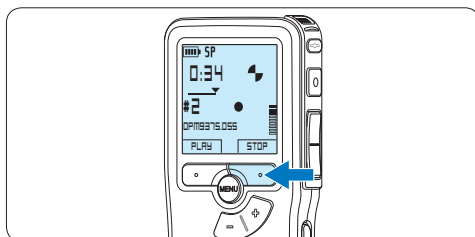
- 4 To start recording, press the **RECORD** button and start speaking.



- The status LED glows in red (in overwrite and append mode) or green (in insert mode) while recording.
- The following information is displayed:
 - a Recording format
 - b Recording time
 - c Current position in the recording
 - d File number
 - e File name

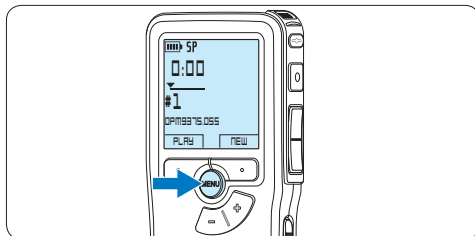


- 5 For short pauses, press the **RECORD** button. The status LED flashes. To continue recording, press the **RECORD** button again.
- 6 To stop recording, press the **STOP** smart button.

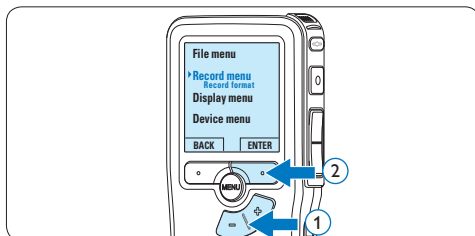


Note

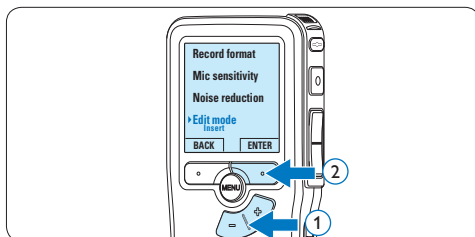
- For best results, speak clearly and keep the microphone about four inches (ten centimeters) away from your mouth.
- Set the desired voice activation function (see [5.2 Use voice-activated recording on page 21](#) for more information) and recording format (see [4.1.5 Change the recording format on page 15](#) for more information) before starting recording.
- The *Insert* recording mode is not available when the recording format is MP3.
- Make a test recording to make sure that the settings are correct.
- Do not remove the batteries during recording. This may cause the recorder to malfunction.
- If recording for a prolonged period of time, replace the batteries before beginning.



- 2 Press the **+** or **-** button to select the *Record* menu item and press the **ENTER** smart button to enter the submenu.



- 3 Press the **+** or **-** button to select the *Edit mode* menu item and press the **ENTER** smart button to enter the submenu.

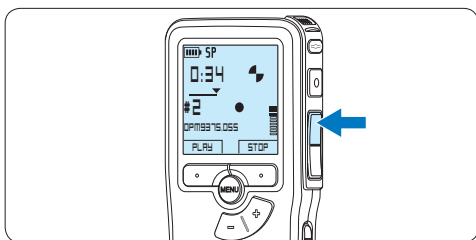


- 4 Press the **+** or **-** button to choose between *Insert*, *Overwrite* or *Append* mode.
 - In *insert* mode, additional recording can be inserted into a previously recorded file. The status LED glows in green while recording and the symbol is displayed. The *Insert* recording mode is not available when the recording format is MP3.
 - In *overwrite* mode, additional recording will overwrite a previously recorded file. The status LED glows in red while recording.
 - In *append* mode, additional recording

4.1.2 Review recording

Press the **REW** button briefly while recording to jump back two seconds and start playback.


Press and hold the **REW** button while recording to rewind. Release the **REW** button to stop winding and start playback.

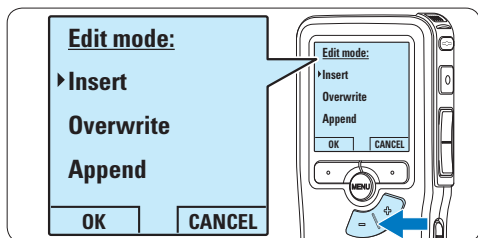


4.1.3 Edit a recording (insert/overwrite/append)

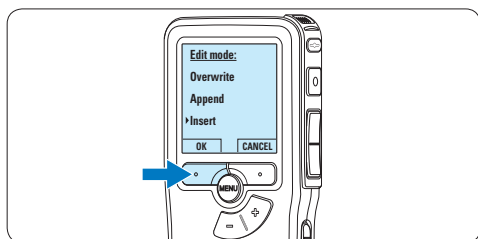
Files are recorded in overwrite mode by default. Follow these steps to switch to insert or append mode to make additions to a recording:

- 1 Press the **MENU** button while stopped to open the menu.

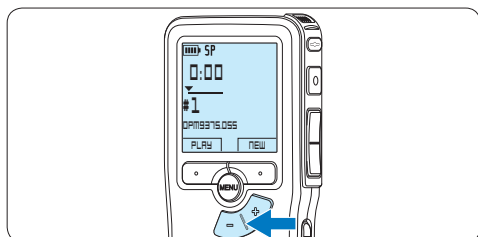
will always be inserted at the end of a previously recorded file. The status LED glows in red while recording and the  symbol is displayed.



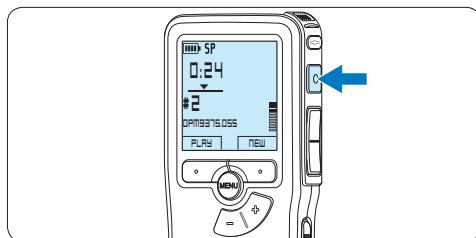
- 5 Press the **OK** smart button to save the setting or press the **CANCEL** smart button to exit the sub-menu without changing the setting.



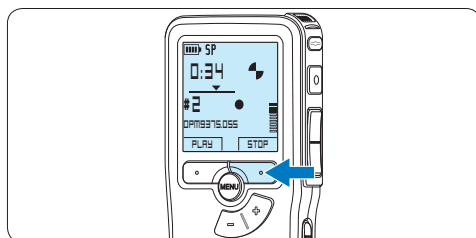
- 6 Press the **+** or **-** button to select the file to be modified.



- 7 Play, forward or rewind to the position where the modification should be made.
- 8 To start recording, press the **RECORD** button and start speaking.



- 9 To stop recording, press the **STOP** smart button.

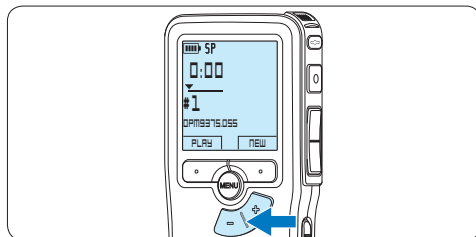



- 10 Repeat from step 1 to return to overwrite recording mode.

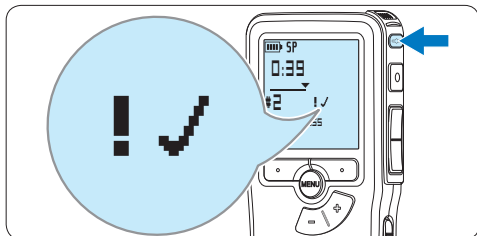
4.1.4 Finish (lock) a recording

When a recording is finished and no additional changes will be made, follow these steps to mark it as finished and protect it from being accidentally deleted:

- 1 Press the **+** or **-** button while stopped to select the recording to be marked finished.



- 2 Press the end-of-letter (**EOL**) button to lock the file and mark it as finished.
The  symbol is displayed.



- 3 To assign priority status to the recording, press the **EOL** button again within half a second.

The **!** symbol is displayed, indicating that the file has priority status.

- 4 To make changes to the recording, press the **EOL** button again to remove the finished mark.

Tip

Philips SpeechExec software can be configured to download only those files from the Pocket Memo to the PC that are marked finished.

Caution

Locked files are deleted when the memory card is formatted or the delete-all-dictations function is used.

4.1.5 Change the recording format

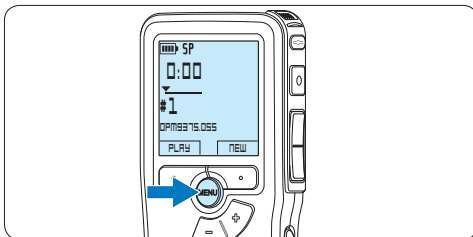
The recording format determines the audio quality of recordings and affects the number of audio files that can fit on the memory card. The Pocket Memo supports the following recording formats:

Recording format	File format	Recording time (1 GB memory)
XHQ	.mp3	18 hours
HQ	.mp3	36 hours
QP	.ds2 (DSS QP)	85 hours
SP	.dss (DSS SP)	170 hours

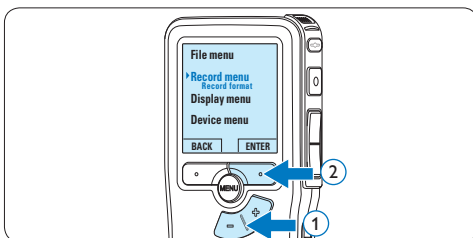
Note

The *Insert* recording mode is not available when the recording format is MP3.

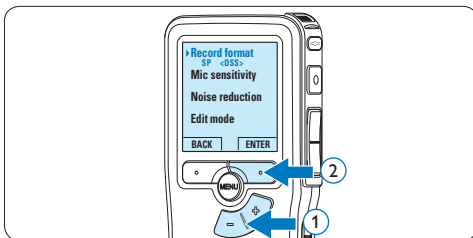
- 1 Press the **MENU** button while stopped to open the menu.



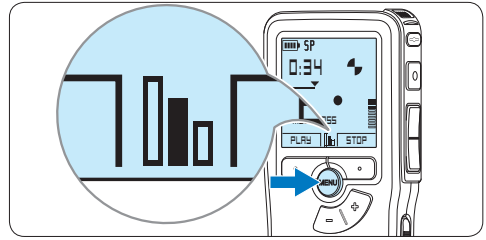
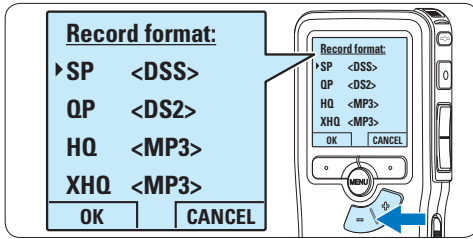
- 2 Press the **+** or **-** button to select the **Record** menu item and press the **ENTER** smart button.



- 3 Press the **+** or **-** button to select the **Record format** menu item and press the **ENTER** smart button.



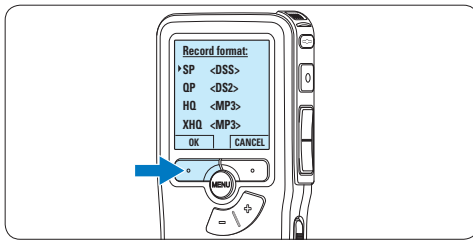
- 4 Press the **+** or **-** button to choose between **SP**, **QP**, **HQ** and **XHQ**.



- 5 Press the **OK** smart button to save the setting or press the **CANCEL** smart button to exit the sub-menu without changing the setting.

ⓘ Note

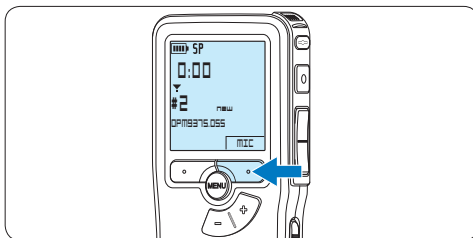
It is also possible to change the microphone sensitivity using the menu. See [5.6 Menu settings on page 25](#) for more information.



4.1.6 Adjust the microphone sensitivity

Set the microphone sensitivity for the environment and your recording preferences.

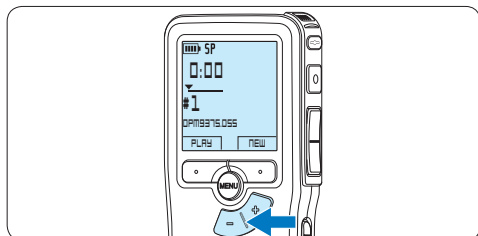
- 1 If the current recording is empty, press the **MIC** smart button to change the microphone sensitivity.



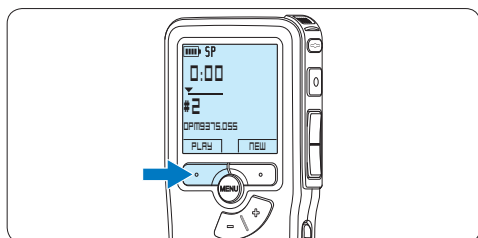
- 2 During recording, press the **MENU** button to change the microphone sensitivity.

4.2 Playback

- 1 Press the **+** or **-** button while stopped to select the file to play and locate the beginning of the recording.

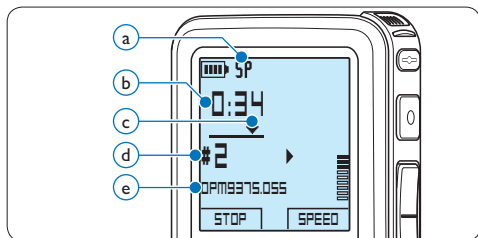


- 2 Press the **PLAY** smart button to start playback.

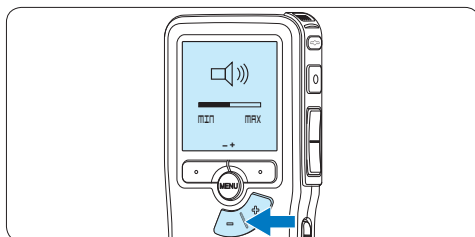


The following information is displayed:

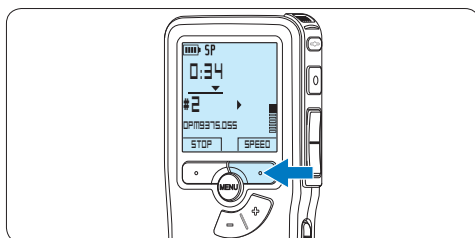
- a Recording format
- b Playback position (minutes : seconds)
- c Current position in the recording
- d File number
- e File name



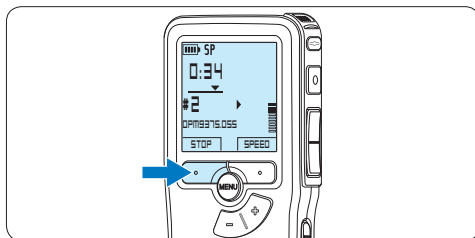
- 3 Press the **+** or **-** button to adjust the playback volume during playback.



- 4 Press the **SPEED** smart button to adjust faster or slower file playback.

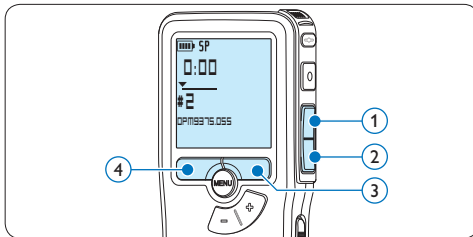


- 5 Press the **STOP** smart button to stop playback.



4.2.1 Overview of playback functions

Fast rewind	Press the REW button ① briefly while stopped. Press the STOP smart button ③ to stop winding or the PLAY smart button ④ to stop winding and start playback.
Fast forward	Press the FWD button ② briefly while stopped. Press the STOP smart button ③ to stop fast forward or the PLAY smart button ④ to stop fast forward and start playback.
Rewind	Press and hold the REW button ① while playing or recording. Release the REW button to stop winding.
Cue	Press and hold the FWD button ② while playing. Release the FWD button to cue-play.
Auto-backspace	Press the REW ① button briefly while playing or recording to recap the last second.
File selection	Press the + button once while in the stop position to skip to the end of a file. Press the + button again to skip to the beginning of the next file. Press the - button once while in the stop position to skip to the beginning of a file. Press the - button again to skip to the end of the previous file.

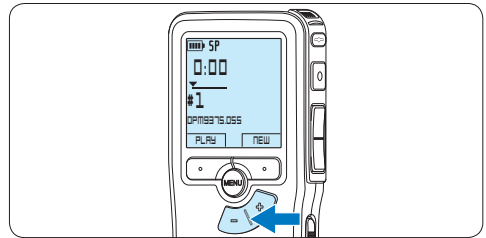


4.3 Delete a file

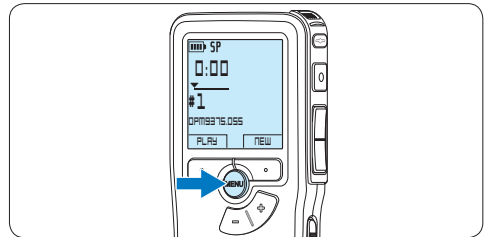
Note

Before deleting a file, make sure that it is not marked finished and that the memory card is not set to read-only (locked). If the file is marked finished, unlock it by pressing the **EOL** button once.

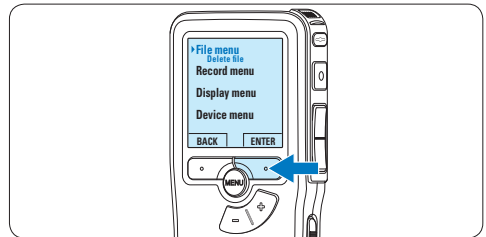
- 1 Press the **+** or **-** button while stopped to select the file to be deleted.



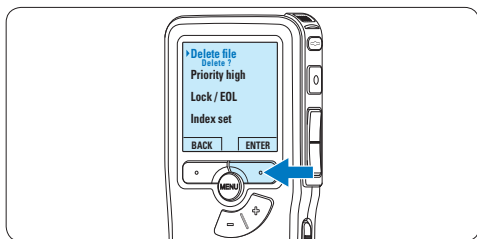
- 2 Press the **MENU** button to open the menu. The **File** menu item is selected.



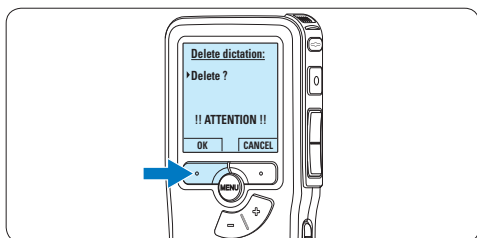
- 3 Press the **ENTER** smart button to enter the sub menu. The **Delete file** menu item is selected.



- 4 Press the **ENTER** smart button to enter the sub menu.



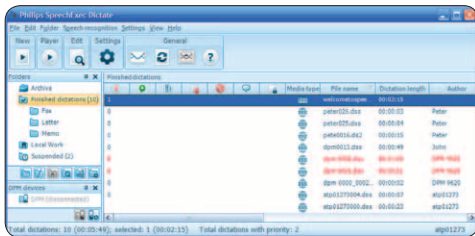
- 5 Press the **OK** smart button to delete the file permanently. Press the **CANCEL** smart button to cancel the operation and leave the recording intact.



5 Use more of your Pocket Memo

5.1 Use Philips SpeechExec software

Philips SpeechExec software can be used for advanced configuration of the Pocket Memo and automatic download, conversion and routing of dictation files.



Note

For detailed information about *SpeechExec* software, refer to the *SpeechExec* user manual.

5.1.1 Advanced configuration

The Pocket Memo Configuration Wizard is part of the *Philips SpeechExec Dictate* software and guides users through the device configurations and settings of their Pocket Memo. The wizard assists users in configuring the time format, sound feedback, voice-activated recording, display appearance (standard or advanced display mode), the recording format, microphone sensitivity, author names, and file download to the PC.

- 1 Connect the Pocket Memo to the PC using a USB cable.
- 2 Start *Philips SpeechExec Dictate* software.
- 3 Click **Settings > General Settings** on the menu bar of *SpeechExec* to open the settings menu and select **DPM/DT Configuration > DPM Wizard** from the list on the left side.
- 4 Click the **Start Wizard...** button to open the wizard. Follow the on-screen instructions to

customize the Pocket Memo.

- 5 Click the **Finish** button to close the wizard and confirm the transfer of the new settings to the Pocket Memo.

Note

When the Pocket Memo is connected to the PC for the first time, Windows detects the new hardware and automatically installs the required drivers. When the installation is complete, Windows may prompt you to restart the PC.

5.1.2 Download recordings to the PC

With USB mass storage support, the Pocket Memo is automatically displayed as an external drive when it is connected to the computer. It can then be accessed easily with any Microsoft Windows program as a regular drive. Use *Philips SpeechExec* software for automatic download, conversion and routing of files.

- 1 Make a recording with the Pocket Memo.
- 2 Start *Philips SpeechExec Dictate* software.
- 3 Connect the Pocket Memo to the PC using the USB cable or the optional USB docking station.
- 4 By default, the recordings on the Pocket Memo will be downloaded automatically to the PC and moved to the *Finished dictations* folder of the worklist.

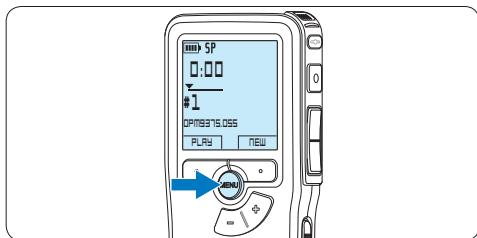
Note

How and which files are downloaded after a Pocket Memo is connected can be configured in the settings menu of *SpeechExec* or with the Configuration Wizard.

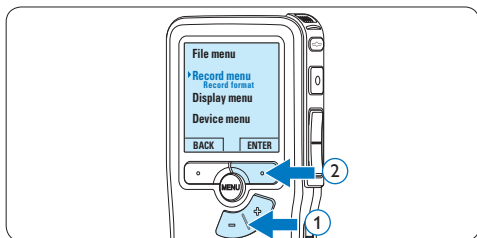
5.2 Use voice-activated recording

Voice-activated recording is a convenience feature for hands-free recording. When voice-activated recording is enabled, recording will start when you begin speaking. When you stop speaking, the Pocket Memo will automatically pause recording after three seconds of silence, and resume only when you begin speaking again.

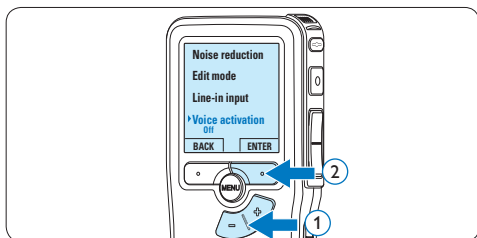
- 1 Press the **MENU** button while stopped to open the menu.



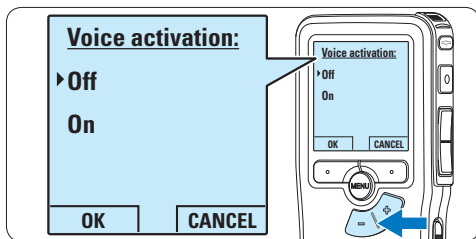
- 2 Press the **+** or **-** button to select the **Record** menu item and press the **ENTER** smart button.



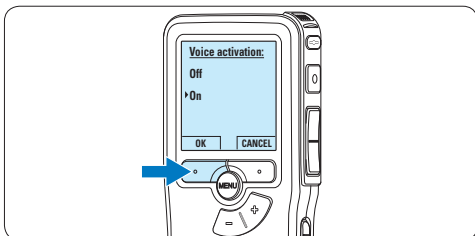
- 3 Press the **+** or **-** button to select the **Voice activation** menu item and press the **ENTER** smart button.



- 4 Press the **+** or **-** button to choose **Off** or **On**.

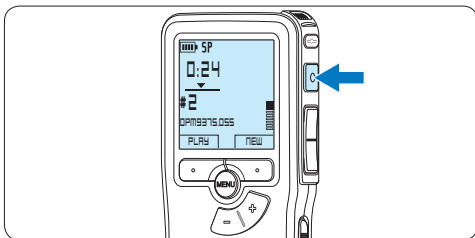


- 5 Press the **OK** smart button to save the setting or press the **CANCEL** smart button to exit the sub-menu without changing the setting.

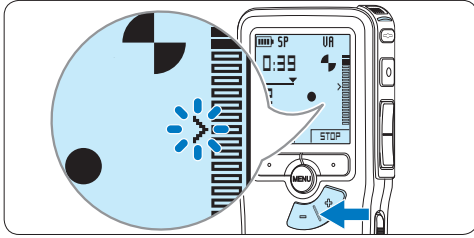


- 6 To start recording, press the **RECORD** button start speaking.

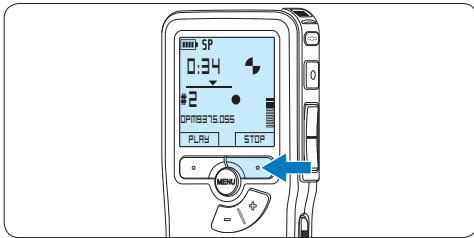
The status LED glows in red (in overwrite and append mode) or green (in insert mode) while recording. When the sound level drops below the threshold sound level, recording pauses after three seconds and the status LED flashes.



- 7 Press the **+** or **-** button to adjust the threshold sound level while recording.



- 8 To stop recording, press the **STOP** smart button.

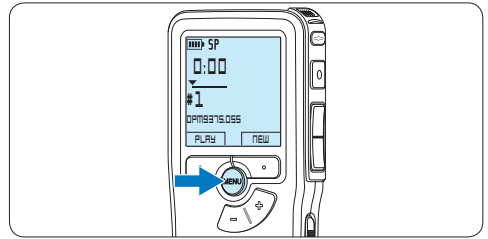


5.3 Work with index marks

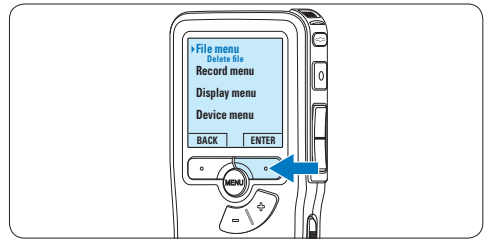
Index marks can be used to mark certain points in a recording as points of reference. A point of reference may be the beginning of a major section, or a part of the recording that you may want to revise later or access quickly.

5.3.1 Insert an index mark

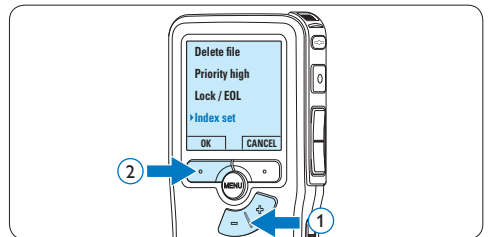
- 1 Play back, fast forward or fast rewind to the position where the index mark should be set.
- 2 Press the **MENU** button while stopped to open the menu.
*The **File** menu item is selected.*



- 3 Press the **ENTER** smart button to enter the sub menu.

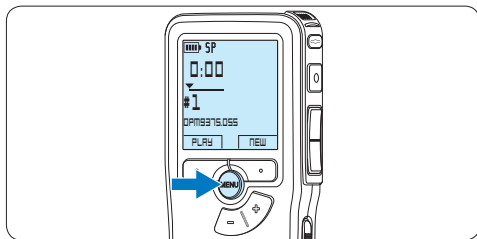


- 4 Press the **+** or **-** button to select the **Index set** menu and press the **OK** smart button.

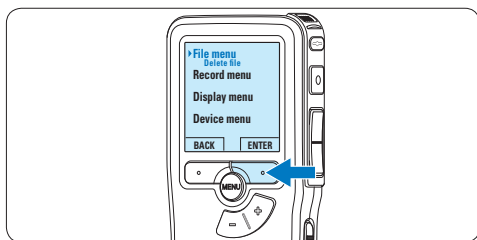


5.3.2 Delete an index mark

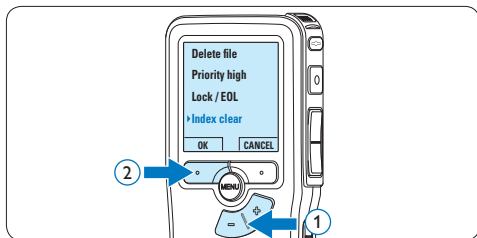
- 1 Play back, fast forward or fast rewind to the index mark to be deleted.
- 2 Press the **MENU** button while stopped to open the menu.
The *File* menu item is selected.



- 3 Press the **ENTER** smart button to enter the sub menu.



- 4 Press the **+** or **-** button to select the *Index clear* menu and press the **OK** smart button.



5.4 Assign an author's name

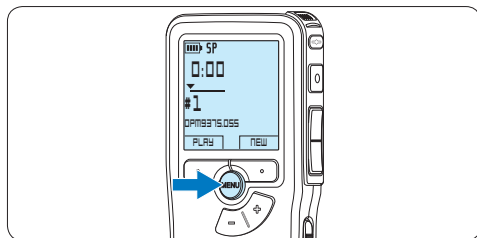
A keyword, such as the author's name can be assigned to every recording. The keyword can be used to identify recordings and automatic file routing in *Philips SpeechExec* software.

Note

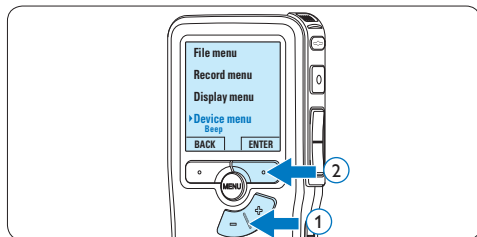
Author names must first be set up with *Philips SpeechExec* software. See [5.1.1 Advanced configuration](#) on page 20 for more information. By default, the keyword category **AUTHOR** with the keywords 'DPM 9380' and '- - -' (empty = default) is available on the Pocket Memo.

To assign an author's name to a recording:

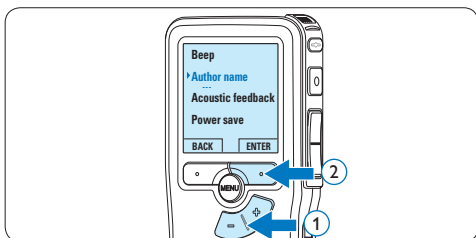
- 1 Press the **MENU** button while stopped to open the menu.



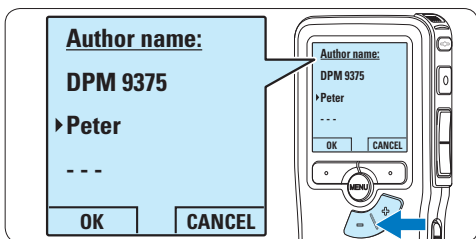
- 2 Press the **+** or **-** button to select the *Device* menu item and press the **ENTER** smart button.



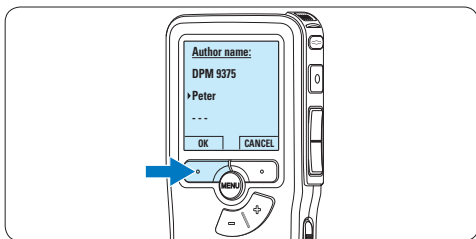
- 3 Press the **+** or **-** button to select the *Author name* menu item and press the **ENTER** smart button.



- 4 Press the **+** or **-** button to select a name.



- 5 Press the **OK** smart button to confirm or the **CANCEL** smart button to exit without assigning a name.



5.5 Update the firmware

Your Pocket Memo is controlled by an internal program called firmware. As a part of ongoing product maintenance, the firmware is revised and errors are corrected.

It is possible that a newer version (an “update”) of the firmware has been issued since you purchased the Pocket Memo. In this case you can easily update your recorder to the latest version.

- 1 Connect the Pocket Memo to your computer using the supplied USB cable.
- 2 Download the firmware update for your Pocket Memo from www.philips.com onto your computer.
- 3 Copy the new firmware file to the root directory of the Pocket Memo.
- 4 Disconnecting the Pocket Memo from the computer automatically updates the firmware.

! Caution

- Fully charge the batteries before the firmware update. A power failure during the firmware writing operation may disable the recorder
- Do not remove the memory card during the firmware update.

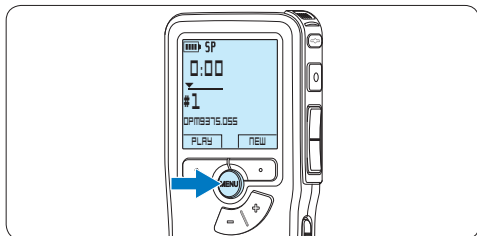
≡ Note

- Please note that the firmware file must be located in the root directory to allow automatic updating.
- The firmware file will be deleted automatically after the update has been carried out.

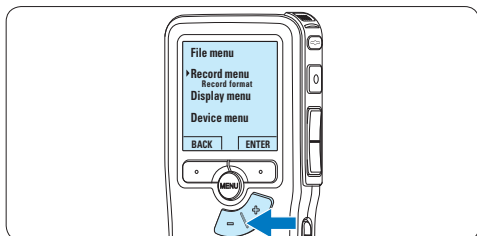
5.6 Menu settings

To access the Pocket Memo menu:

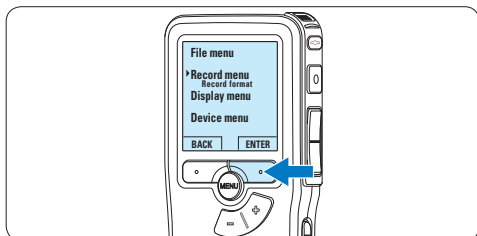
- 1 Press the **MENU** button while stopped to open the Pocket Memo menu.



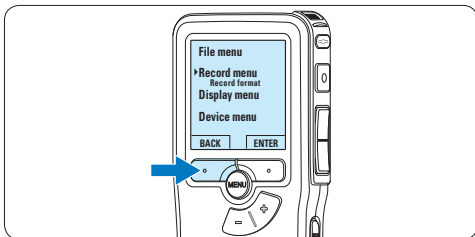
- 2 Press the **+** or **-** button to select the next/previous menu item.



- 3 Press the **ENTER** smart button or the **MENU** button to enter a submenu.



- 4 Press the **BACK** smart button to exit the menu.



- 5 Press the **+** or **-** button to select a function.
- 6 Press the **OK** smart button to confirm a selection or the **CANCEL** smart button to exit a sub-menu without changing a setting.

Note

- Some settings, such as defining author names or switching to the simple display mode, are available only through *Philips SpeechExec Dictate*. See [5.1.1 Advanced configuration](#) on page 20 for more information.
- Press and hold the **MENU** button for a few seconds to access additional information about files, the device, and the memory card.

5.6.1 Menu list

Press the MENU button	Options	Reference
File menu		
Delete file Delete the current file.		Ch. 4.3, p. 18
Priority Assign priority status to the recording.	High, Normal	
Lock / EOL Mark a recording as finished (EOL/End of letter) and protect it from being modified or deleted.	Lock, Unlock	Ch. 4.1.4, p. 14
Index Index marks can be used to mark certain points in a recording as points of reference.	Set, Clear	Ch. 5.3, p. 22
Information Display a variety of information related to the current file.	File number, recording date & time, author name, file length	
Record menu		
Record format The recording format determines the audio quality of recordings and affects the number of audio files that can fit on the memory card.	SP (.dss) , QP (.ds2), HQ (.mp3), XHQ (.mp3)	Ch. 4.1.5, p. 15
Microphone sensitivity Adjust the recording sensitivity to avoid recording background noises and to adjust to the recording environment. Use the Low (Private) setting when recording in a noisy environment.	Low (Private), Medium (Dictate) , High (Conference)	Ch. 4.1.6, p. 16
Noise reduction Reduces noise level of a recording during playback.	On , Off	
Edit mode Set how to edit a previously recorded file.	Overwrite , Insert, Append	Ch. 4.1.3, p. 13
Line-in input Record from an external source via the microphone connector.	Off , Mono, Stereo	
Voice activation When voice-activated recording is enabled, recording will start when you begin speaking. When you stop speaking, the recorder will automatically pause recording after three seconds of silence, and resume only when you begin speaking again.	Off , On	Ch. 5.2, p. 21
Display menu		
Backlight The display remains illuminated for the time set when a button is pressed.	8 sec , 20 sec, Off	
Contrast Adjust the display contrast.		
Record lamp Turn the status LED on or off.	On , Off	
Language Set the display language for the recorder.		Ch. 3.5.1, p. 10

Device menu

Beep	On, Off	
The recorder gives sound feedback about button operations or errors.		
Author name		Ch. 5.4, p. 23
A keyword, such as the author's name can be assigned to every recording. The keyword can be used to identify recordings and automatic file routing in Philips <i>SpeechExec</i> software.		
Acoustic feedback	On, Off	Ch. 4.2.1, p. 18
Allows you to listen to the recording while forwarding or rewinding.		
Power save	5 min, 10 min, 30 min, 60 min, Off	Ch. 3.6, p. 11
Set the time to enter Power save mode.		
Date & time		Ch. 3.5.2, p. 10
Set the date and the time.		
Silent mode	On, Off	
When the silent mode is enabled, the background light, the device beep and the record lamp are disabled.		
Format card		Ch. 3.3, p. 9
Format the memory card and delete all files on the recorder.		
Card info		
Display a variety of information related to the memory card.		
System info		
Display system information, such as model number, serial number and firmware version.		
USB quick charge	On, Off	Ch. 3.2, p. 8
When the USB quick charging is deactivated, charging the batteries is performed at a slower speed. Disable the USB quick charge function, if the USB port of your computer does not supply enough power capacity (500 mA).		
Reset settings	Start, Cancel	
Return the menu settings to their initial state.		

6 Technical data

Connectivity

- Headphones: 3.5 mm
 - Microphone: 3.5 mm
 - USB: High-speed USB 2.0
 - Docking connector
 - Memory card slot
-

Display

- Type: LCD
 - Diagonal screen size: 44 mm/1.7 in.
 - Backlight: white
-

Storage media

- Exchangeable memory card
 - Memory card types: Secure Digital (SD), Secure Digital (SDHC)
 - Mass storage class compliant
-

Audio recording

- Recording formats: Digital speech standard (DSS), MPEG1 layer 3 (MP3)
 - Built-in microphone: mono
 - Recording modes: XHQ (MP3/stereo), HQ (MP3/stereo), QP (DSS/mono), SP (DSS/mono)
 - Bit rate: 13.5, 27, 64, 128 kbps
 - Recording time (2 GB card): 349 hours (SP), 170 hours (QP), 72 hours (HQ), 36 hours (XHQ)
 - Sample rate: 44.1 (XHQ), 32 kHz (HQ), 16 kHz (QP), 12 kHz (SP)
-

Sound

- Speaker type: built-in round dynamic speaker
 - Speaker diameter: 30 mm
 - Speaker output power: 200 mW
 - Frequency response: 300–8,000 (XHQ), 300–8,000 (HQ), 300–7,000 (QP), 300–5,700 (SP) Hz
-

Power

- Battery type: AAA/LR03 Alkaline, Philips AAA Ni-MH LFH9154
 - Number of batteries: 2
 - Rechargeable: yes, via USB
 - Battery lifetime: up to 23 hours in SP recording mode
 - Batteries included
-

System requirements

- Processor: Pentium III 1 Ghz, Pentium IV recommended
 - RAM memory: 512 MB (1 GB recommended)
 - Hard disk space: 100 MB for SpeechExec, 250MB for Microsoft .NET
 - Headphone output or speakers
 - Operating system: Windows 7/Vista/XP
 - Free USB port
 - DVD-ROM drive
 - Sound card
-

Green specifications

- Compliant to 2002/95/EC (RoHS)
 - Lead-free soldered product
-

Accessories

- SpeechExec Dictate software
 - USB cable
 - Secure Digital memory card
 - Pouch
 - Quick start guide
 - 2 × AAA batteries
-

Design and finishing

- Color(s): black aluminum
 - Material: full metal body
-

Federal Communications Commission Notice

This equipment has been tested and found to comply with the limits for a Class B digital device, pursuant to part 15 of the FCC Rules. These limits are designed to provide reasonable protection against harmful interference in a residential installation. This equipment generates, uses, and can radiate radio frequency energy and, if not installed and used in accordance with the instructions, may cause harmful interference to radio communications. However, there is no guarantee that interference will not occur in a particular installation. If this equipment does cause harmful interference to radio or television reception, which can be determined by turning the equipment off and on, the user is encouraged to try to correct the interference by one or more of the following measures:

- Reorient or relocate the receiving antenna.
- Increase the separation between the equipment and the receiver.
- Connect the equipment into an outlet on a circuit different from that to which the receiver is connected.
- Consult the dealer or an experienced radio or television technician for help.

Modifications

The FCC requires the user to be notified that any changes or modifications made to this device that are not expressly approved by Philips may void the user's authority to operate the equipment.

Cables

Connections to this device must be made with shielded cables with metallic RFI/EMI connector hoods to maintain compliance with FCC Rules and Regulations.

Canadian notice

This Class B digital apparatus meets all requirements of the Canadian Interference-Causing Equipment Regulations.

Avis Canadien

Cet appareil numérique de la classe B respecte toutes les exigences du Règlement sur le matériel brouilleur du Canada.

Declaration of Conformity

Model Number: LFH9375
Trade Name: Philips Pocket Memo
Responsible Party: Philips Speech Processing
Address: 64 Perimeter Center East,
Atlanta, GA 30346, USA
Telephone number: 888-260-6261
Website: www.philips.com/dictation

LFH9375



Tested to comply with
FCC standards

FOR HOME OR OFFICE USE

This device complies with Part 15 of the FCC Rules. Operation is subject to the following two conditions: 1) This device may not cause harmful interference. 2) This device must accept any interference received, including interference that may cause undesired operation.

CE Declaration of Conformity

Philips confirms that the product corresponds to the relevant guidelines of the European Union.



Specifications are subject to change without notice.

Trademarks are the property of Royal Philips Electronics or their respective owners.

© 2010 Royal Philips Electronics. All rights reserved.

Document version 1.0, 16/12/2010.